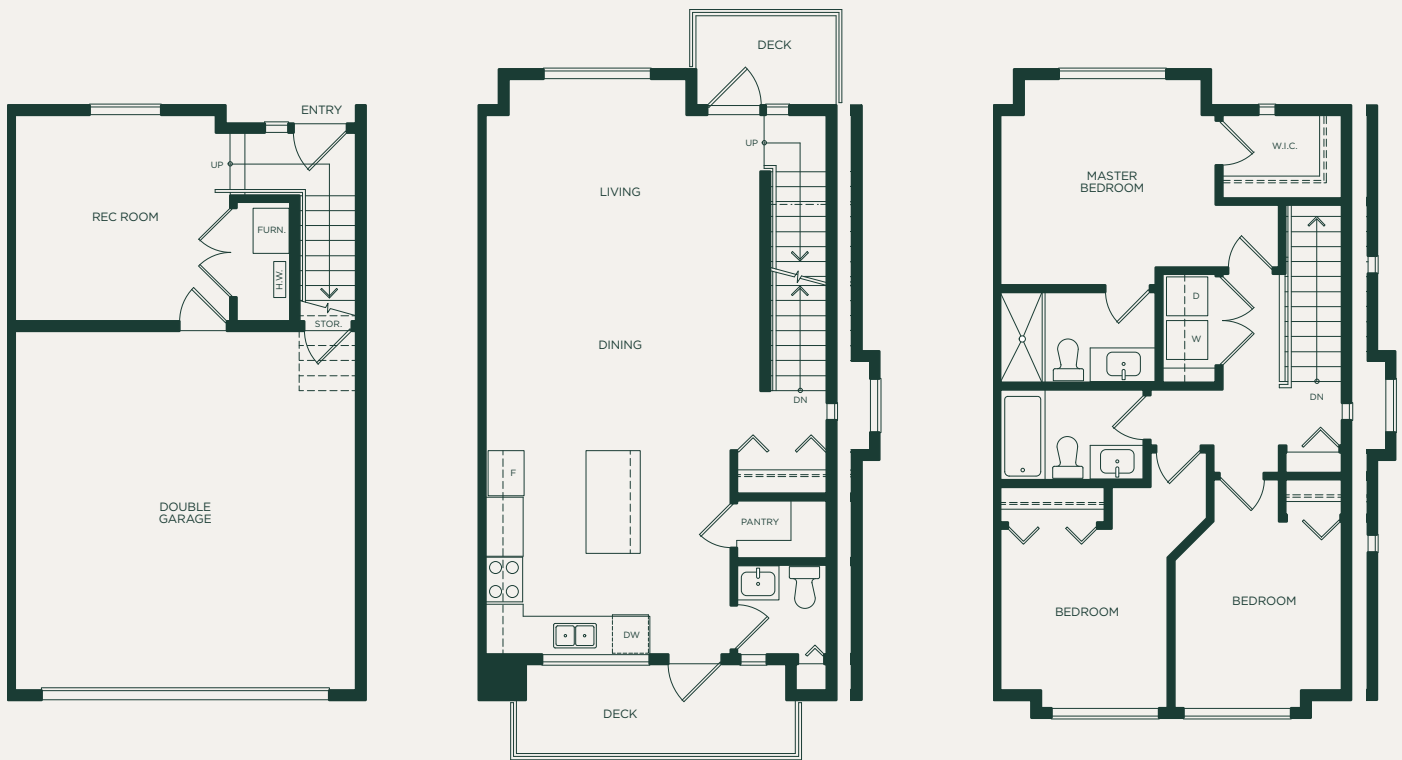


PARKSIDE SERIES

RIVER
+ PINE
on the Nicomekl

B* 3 BEDROOM + REC ROOM · 2.5 BATH · 1591 - 1597 SQ FT



LOWER LEVEL
240 SQ FT

MAIN LEVEL
647 - 653 SQ FT

UPPER LEVEL
692 - 698 SQ FT

* Wall variations are different in each B* plan depending on where they are located within the River + Pine Community. Please reference architectural plans for details.

The developer reserves the right to make modifications and changes to the building design, elevations, dimensions, specifications, features and prices without prior notification. Decks, patios, stairs and windows may vary based on site conditions. All sizes and dimensions are approximate and based on architectural measurements. Reverse and/or mirror plans occur throughout the development. Please see disclosure statement for specific offering once available. E. & O.E.