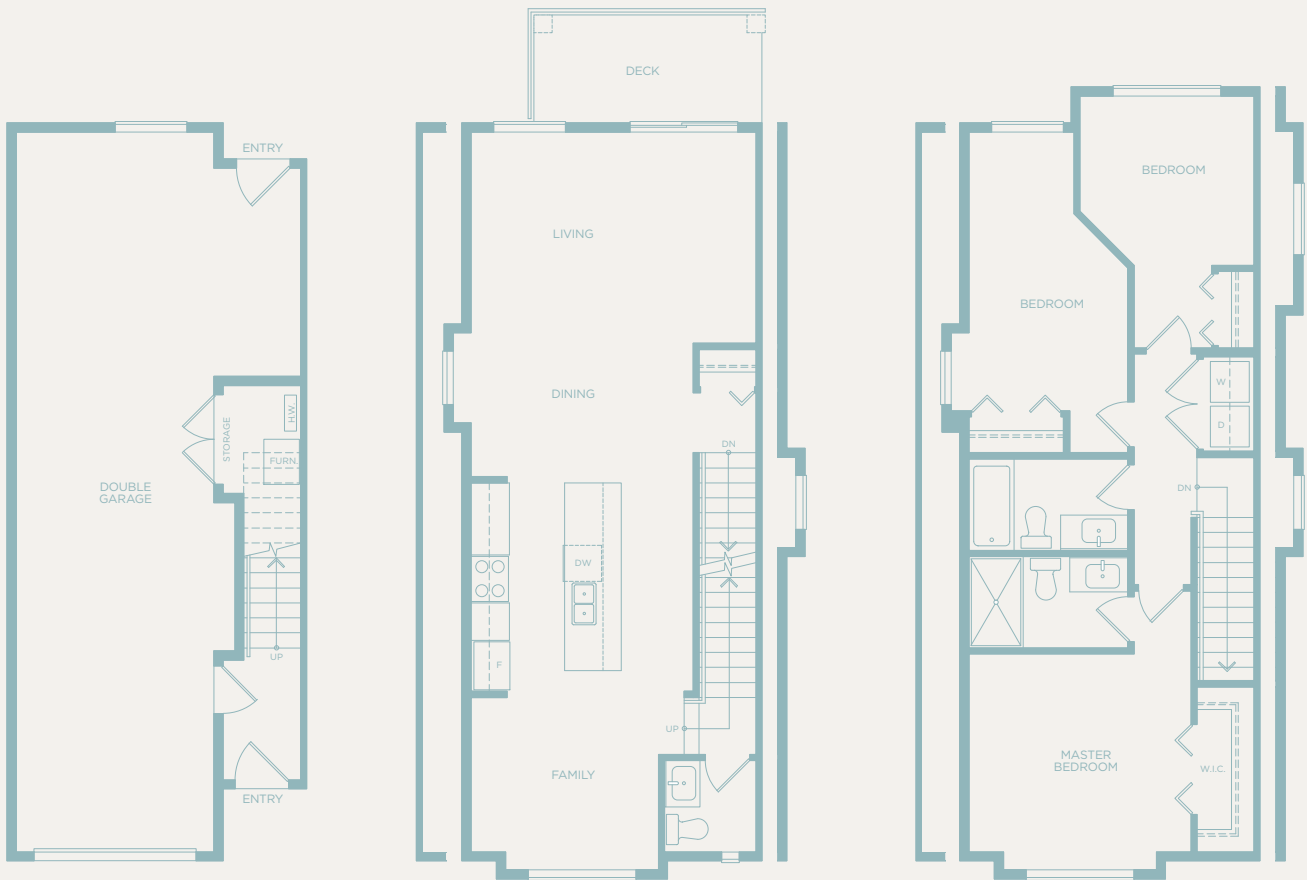


RIVERFRONT SERIES

R I V E R
+ P I N E
on the Neconek

D* 3 BEDROOM · 2.5 BATH · 1528 - 1543 SQ FT



LOWER LEVEL

109 - 113 SQ FT

MAIN LEVEL

693 - 699 SQ FT

UPPER LEVEL

720 - 731 SQ FT

* Wall variations are different in each D* plan depending on where they are located within the River + Pine Community. Please reference architectural plans for details.

The developer reserves the right to make modifications and changes to the building design, elevations, dimensions, specifications, features and prices without prior notification. Decks, patios, stairs and windows may vary based on site conditions. All sizes and dimensions are approximate and based on architectural measurements. Reverse and/or mirror plans occur throughout the development. Please see disclosure statement for specific offering once available. E. & O.E.